

## A White Canvas

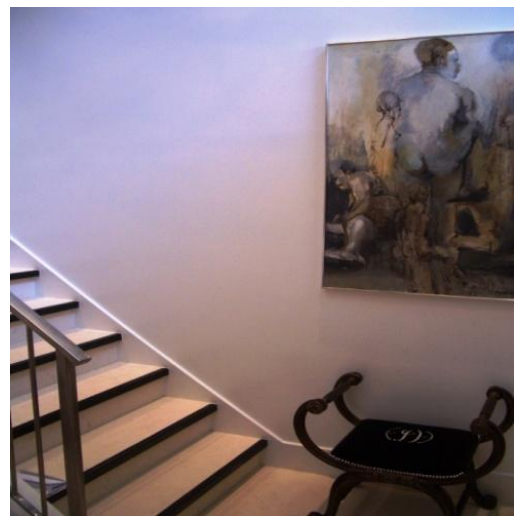
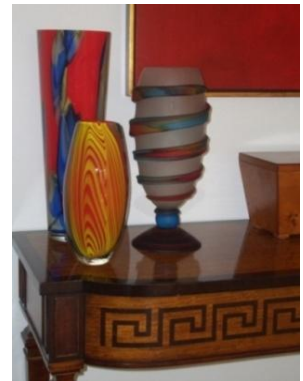
A white canvas is a great place to start when the homeowners choose to surround themselves with just the right touch of color. This is the story of a truly unique project in the exclusive Woodlands community of Carltonwood whose owner downsized from another custom home a stone's throw away.

Over a two year period, builder Carl Goshy with Tom Landry's very close supervision took the blueprints and stretched the "white canvas" over a 2 story frame. Right away, you realize there will be nothing bland about this project.

As you approach, Zebra wood double doors are flanked by Terranova granite slabs with a tornado-like pattern mounted as sidelights. Inside, the left entry wall boasts a slab of Café Rainforest Yellow granite with rough chiseled edge mounted as art.



Anxious to explore the red vignette at the top of the stairs, you must climb the white stair treads and risers sharply defined by **Absolute Black granite trim.**



Not yet! First follow the Mediterranean White Limestone path, past the dining room to the kitchen and family room.

Venture past the Three Monkeys: SEE the variety of design elements that have come together successfully. 'HEAR' the spots of color 'pop'! Patient and intense communication produce NO EVIL when the contractor, homeowner and the trades speak and work; and talk and rework to solve the difficult issues of turning a complex blueprint into reality.



This is not JUST a white canvas. There is an alphabet of hues that fan out as foundation for wildly understated texture and color. Calcutta Supreme, Mystery White, Bianco Abakan, Thassas White, marble and granite slabs appear in starring roles: Island, kitchen counters, backsplash, fireplace surround and bar surface, poolside vanity, full showers and tub decks, and desk tops. **Yukon Blanco SileStone** makes an appropriate appearance as the hobby room work surface.

White is not neutral; it is the cement that binds the whole. Use of the clean cut square edge emphasizes the island as a gathering place and reinforces a contemporary theme throughout.



A commercial grade triple sink in the kitchen required modifications of the cabinet to accommodate its depth, and the marble counter to allow for its width. The drop in sink profile repeats the **square edge of the marble counter** and runs the length of the picture window.

The modern kitchen, filled with the right tools and a nudge of bright red invites you to ask, "What's cookin'?" The happy answer might be just beyond the glass doors in the well appointed outdoor kitchen. Is that bamboo or grass cloth above the countertop? No, the whole backsplash and accent wall in the sitting area opposite to it is a glass mosaic tile



"woven" with tiny squares of Light **Emperador Marble**. **The matching marble countertop** is the elegant landing zone for something wonderful sizzling on grill.



The red basket in the corner might hold an assortment of pool toys and trays for family and frequent guests. In a clean and functional setting, year round entertaining is an easy life style choice. Limestone floor tiles used throughout the interior continue past the electric sliding glass doors in this poolside climate controlled 'outdoor' patio.

Rejecting several white paint samples, the homeowner approved primer color as the exact shade of white she was seeking! Visual texture in the natural stone kitchen island contrasts with NO texture on the walls. The expert installation of sheet rock yielded bright, white, smooth, touchable walls. All the earmarks of a classic contemporary composition are present in this environment: stainless steel banister, stainless steel appliances and vent hood, large expanse of glass, clean simple lines, and white couch with real animal skin and faux fabric patterns with eclectic, interesting accessories.



**Genesis Photography**

Absolute Black granite frames the flat screen TV mounted above the remote controlled glass front fireplace, set in the same cool **Mediterranean White Limestone floor to ceiling**. Propeller shaped chrome ceiling fans circulate air and bounce light through traditional leaded crystal bowls and

candlesticks. They in turn, reflect and refract beams of color onto whimsical folk art and serious classic works.

European elegance infused with unstuffy comfort works in the master bedroom. A mink throw warms the foot of the bed. Old world luxury beacons the homeowner with double doors to the master bath. Family pictures in crystal frames, silver and dark leather accessories add a not so subtle layer of sophistication to classic Mister and Mrs. Vanities.



An uncomplicated floor plan, plush white bath towels, and dark wood cabinets draw you in. Light saturates the room. The same beautiful clean color of marble anchors the tub, deck and skirt and climbs the pillars that flank the tub.

Opposite that is an oversized shower, whose huge back wall, is another not “just” white, but richly veined **Calcutta Supreme Marble** slab.



A narrow passage is well suited for a display of family photographs in muted grayscale framed in black and white. That and the black trim on some of the furniture repeats the template clearly drawn in the entry hall staircase.

Returning to the front entry, we hesitate and climb slowly to appreciate the play of **Mediterranean White Limestone** especially ordered and imported straight from the quarry against the trim of black granite. Chosen among several options, this look far surpassed the original solid white staircase.



Genesis Photography

At the landing, the stairs make a 45 degree turn, another place to linger in appreciation of grand scale Asian art. Dark oak floors anchor the play of color and light. At this level, the “white canvas” seems much larger than its 4000+ square feet.

A guest bedroom’s mirrored glass cabinets camouflage their footprint in the room by reflecting the shiny rich fabrics on the bed and loveseat. All 3 bedrooms are traditional playgrounds for those who appreciate fine linens, tapestries, turned posts, comfortable seating and monogrammed velvet.



**Genesis Photography**

The second master bath is another showcase for granite as art. The separate tub and shower capitalize on the quirky striped pattern of the **Bianco Abakan Marble** by featuring a diagonal layout. The seam and its resulting diamond in the corner is an eye-catcher in the otherwise soothing aqua seashell and beach inspired motif. A 3” waterfall edge complements the contemporary setting here and the poolside bath.



For Tom Landry, the homeowners' trust takes the form of a key to the front door with open access to use the home as a showcase. This is the very real reward in total, earned in infinite increments by patient effort and attention to the smallest detail. It is proof positive of extensive communication to really understand what the homeowner wants vs. what has to be done. Builder and homeowner have explored the infinite possibilities to make that white canvas into a completely individual personal space.

The homeowner with the expertise of Egerton Schneider Designs was able to pare down the trappings of a lifetime. How is this for a satisfied client? The homeowner and designers, Denise Schneider and Will Egerton have worked together 3 different times in 3 different homes. For the third time, they have developed a living space that works, with furnishings important enough to keep such as the art deco dining room; and fill in with fresh new looks that were right on target.

A project that started in February of 2008 and was still active in April of 2009 has to be a work in progress, a problem solving event and a labor of love. The notes and sketches from dozens of meetings with homeowner, builder and designer as well as phone calls faithfully transcribed into history on this one job filled a file drawer. For Tony Bolfig of Bolfig Brothers Marble Inc., the finished product is a chance to show off the talent and persistence of professional craftsmen and a long standing working relationship with the builders. Carl Goshy and Tom Landry placed their faith in our company to be able to exceed the expectations of the homeowners' original vision. We appreciate the trust placed in Bolfig Brothers Marble Inc. in this home and in many other custom homes for over three decades.

Story and most photos by Rose Anne Bolfig

On July 21, 2009 Rose Anne Bolfig worked with David Postma of Genesis Photographers to photograph this home. His photos will be noted.

David Postma

[www.GenesisPhotographers.com](http://www.GenesisPhotographers.com)

713.827.9207

